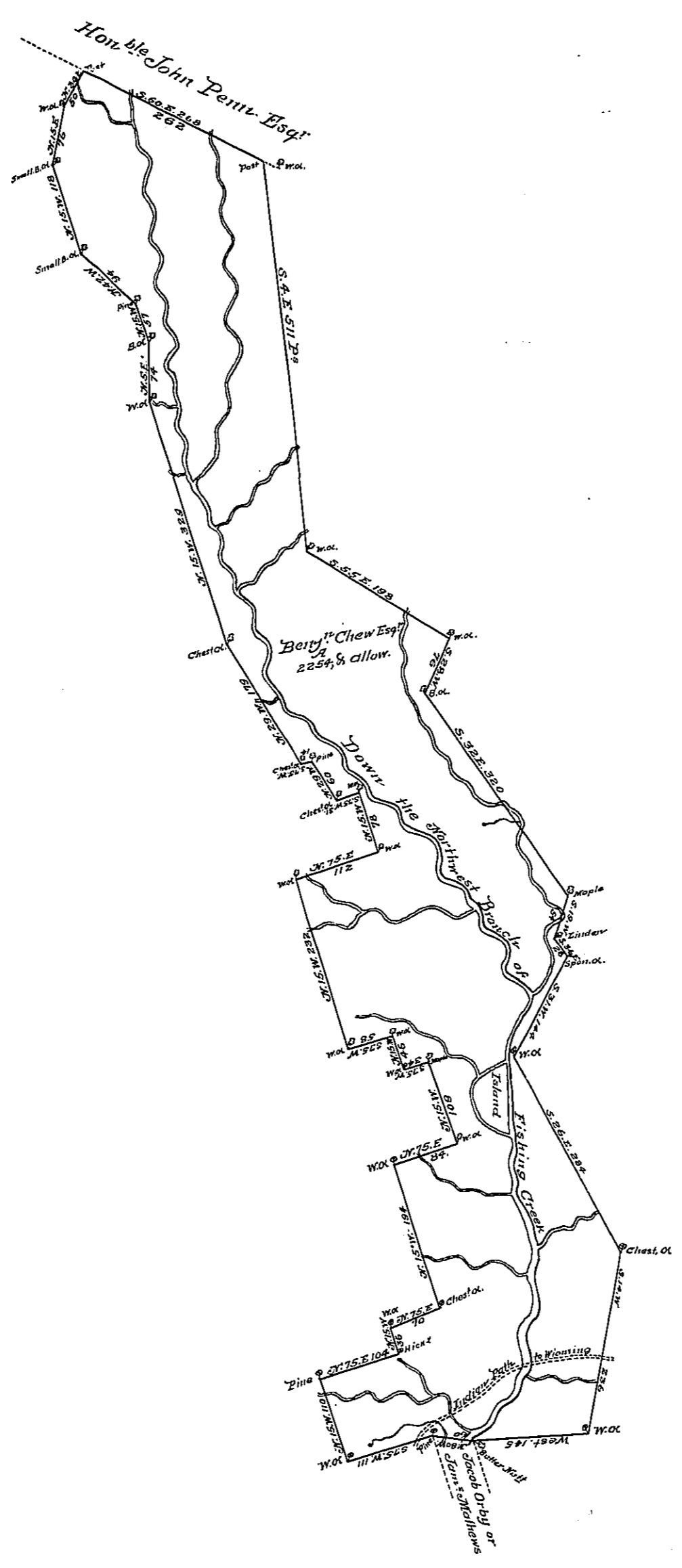


Endorsement on Back

No. 3731.
 Northumberland
 Benjamin Chew Esq.
 or
 2254 & allow^{ce}

529th 7th & all, ref^d Oct. 29, 1799.
 to Benj^r. Chew Esq.^r on W^t to
 accept. of 18th inst.



A Draught of a Tract of Land called Chews Adventure Situate above the Forks of Fishing Creek on the Northwesterly Branch of said Creek Bounded Southerly by land claimed by Jacob Orby, & Others Northerly by lands Returned for the Honorable John Penn. Esquire. Eastward, & Westward by Ridges, and Hills, and containing two thousand two hundred and fifty four Acres besides the usual allowance of Six P. Cent for Roads &c, Surveyed the 27th, & 28th days of October 1773 for Benjamin Chew Esq. In pursuance of an Order dated the tenth day of August 1769 for the Quantity of five thousand Acres of which the above two thousand two hundred and fifty four Acres is a part.

Chas Stewart Dy. Sr.

To
John Irukens Esq. Survey^r Gen^l

In Testimony That the above is a copy of the original remaining on file in the Department of Internal Affairs of Pennsylvania, made conformably to an Act of Assembly approved the 16th day of February 1833, I have hereunto set my Hand and caused the Seal of said Department to be affixed at Harrisburg the first day of September 1910.

Henry House
 Secretary of Internal Affairs.